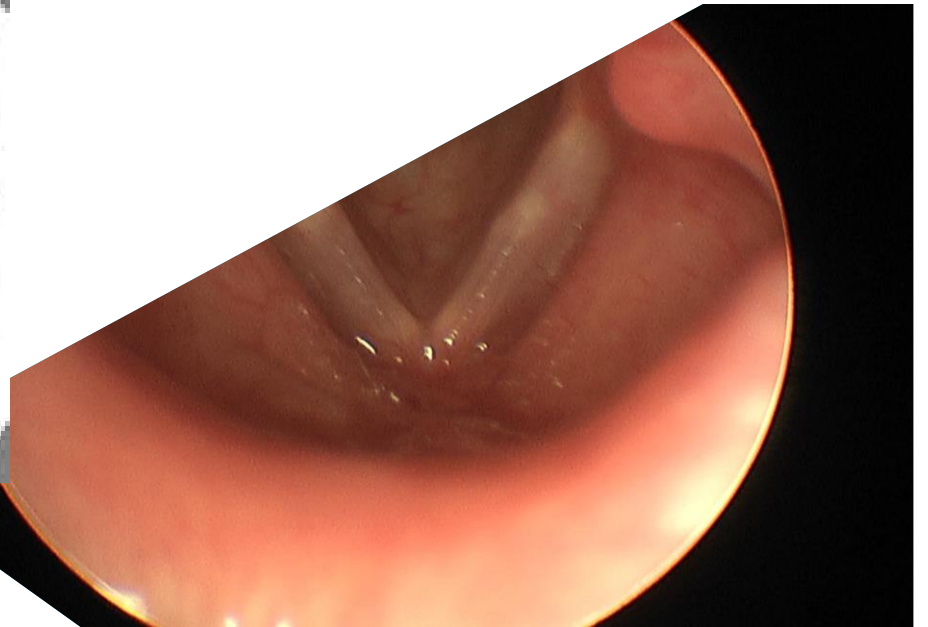


Listening to the voice and making a diagnosis....is it safe?



VOICE CHANGES MEAN SOMETHING.....BUT WHAT??

DON'T GUESS

- Misdiagnosis of voice problems is common.
- Patients are sent to us from physicians with the wrong diagnosis
- Patients are sent to us from singing teachers with the wrong idea of what is causing the problem

Misdiagnoses include:

- Nodules = vocal fold cancer
- Nodules = granuloma
- Nodules = congenital cyst (usually requires surgery)
- Hoarseness = nodules or cyst or polyp
- Loss of range = nodules, hemorrhage, paralysis, bowing
- Reflux = granuloma, paralysis, granuloma, candida

Vocal Fatigue = bowing

Pitch breaks = lesion, paralysis, reflux, laryngitis, allergies

SPEECH PATHOLOGISTS LISTEN TO SPEECH

The Rainbow Passage

When the sunlight strikes raindrops in the air, they act like a prism and form a rainbow.

The rainbow is a division of white light into many beautiful colors.

These take the shape of a long round arch, with its path high above, and its two ends

apparently beyond the horizon. There is, according to legend, a boiling pot of gold at

one end. People look but no one ever finds it. When a man looks for something

beyond his reach, his friends say he is looking for the pot of gold at the end of the rainbow.



PROLONGATION/PHONATION TIME

Hold out the /s/ sound for as long as you can =
average = 15 seconds

Hold out a medium pitched /ah/ for as long as
you can = average = 15 seconds

1:1 ratio is normal

2:1 ratio indicates the vocal folds may have
mass on them

WHAT WILL THE SINGING TEACHERS HEAR IN COMMON VOICE PROBLEMS

- **Nodules and Polyps**
 - ❖ Speech - rough, hoarse, pressed or tight, can do well if loud
 - ❖ Singing - pitch breaks, loss of middle range, can't sing softly
- **Muscle Tension Dysphonia**
 - ❖ Speech - varies from no voice to hoarse, low pitch, rough
 - ❖ Singing - loss of range, pitch breaks, vocal fatigue
- **Hemorrhages**
 - ❖ Speech - squeaky voice, loss of control, pain
 - ❖ Singing - pain, immediate change in singing ability
- **Reflux**
 - ❖ Speech - hoarseness, low gravelly voice
 - ❖ Singing - loss of range
- **Edema or swelling**
 - ❖ Speech - roughness/hoarseness, gravelly
 - ❖ Singing - change in pitch range



Bowing

- ❖ speech = breathiness, soft voice
- ❖ Singing = breathy, weak, can't sustain tones

Vocal fold paralysis

- ❖ speech = breathiness, soft volume or two tones
- ❖ Singing = dipliphonia (double tone) weak voice

WHEN TO REFER TO A VOICE CLINIC/ ENT

- hoarseness for more than 2 weeks
- sudden change in singing ability
- pain when singing
- negative changes in the voice though the student is in lessons
- changes in the voice after a surgery, virus or cold
- student complaining of breathing problems
- student complaining of reflux symptoms

ANY TIME YOU WANT TO SEE WHAT YOU ARE WORKING WITH!

THE PROFESSIONAL RELIES ON TEAM MEMBERS TO PROVIDE THE BEST SERVICE



Don't leave out an important piece to the puzzle!

Singers need us and we need them

Singer needs information about the physical structure of their voice, the movement of the vocal folds and overall vocal health

Singing teacher needs accurate information to help the singer make decisions

LETS WORK TOGETHER!

Anna Siciliano, M.A. CCC/SLP

Anna.siciliano@imail.org

Intermountain Voice and Swallowing Center

801-408-4972